

29/01/2026

Bursa Malaysia Ditutup Rendah Susulan Aktiviti Pengambilan Untung

KUALA LUMPUR, 29 Jan (Bernama) -- Bursa Malaysia meneruskan penurunannya hari ini susulan aktiviti pengambilan untung dengan kebanyakan sektor ditutup lebih rendah ketika pasaran berada dalam fasa penstabilan, kata seorang penganalisis.

Pada 5 petang, FTSE Bursa Malaysia KLCI (FBM KLCI) susut 25.60 mata, atau 1.46 peratus, kepada 1,730.89 daripada paras penutup 1,756.49 pada Rabu.

Indeks petunjuk pasaran itu dibuka rendah turun 3.18 mata kepada 1,753.31, yang merupakan paras tertinggi intra harinya pada hari ini, dan mencecah paras terendah intra harinya pada 1,719.52 semasa sesi dagangan menghampiri sesi tengah hari.

Di keseluruhan pasaran, kaunter rugi mengatasi kaunter untung sebanyak 800 berbanding 372, manakala 532 kaunter tidak berubah, 1,015 kaunter tidak diniagakan dan 109 digantung.

Jumlah dagangan menyusut kepada 3.06 bilion saham bernilai RM3.95 bilion daripada 3.65 bilion unit bernilai RM4.41 bilion pada Rabu.

Pengarah strategi pelaburan dan ahli ekonomi IPPFA Sdn Bhd Mohd Sedek Jantan berkata penurunan pasaran tempatan bagi sesi kedua berturut-turut mencerminkan pelarasan struktur selepas kenaikan kukuhnya pada awal minggu ini.

Beliau berkata indeks utama yang melonjak ke paras 1,770 pada Selasa mencerminkan kenaikan kukuh 5.42 peratus setakat tahun ini, mendorong aktiviti pengambilan untung selepas ia melepasi paras rintangan teknikal utama sekitar 1,760.

"Apa yang penting, penurunan itu menandakan pengambilan keuntungan yang sihat dan bukannya kerana kehilangan keyakinan pasaran, kerana tekanan jualan tidak didorong oleh pemangkin negatif atau pengurangan pendapatan.

"Justeru, fasa penstabilan ini positif, membantu menyelaraskan semula penilaian nilai saham, menstabilkan suasana pasaran dan mewujudkan asas yang lebih mampan untuk aliran meningkat seterusnya," katanya kepada Bernama.

Oleh itu, beliau menjangkakan indeks tersebut akan menguji jajaran 1,730-1,740 minggu ini, paras yang dicapai hari ini, dengan FBM KLCI ditutup pada paras 1,730.

Dalam kalangan saham wajaran tinggi, Maybank dan IHH Healthcare susut 16 sen masing-masing kepada RM11.64 dan RM8.86. Public Bank turun 10 sen kepada RM4.85, CIMB berkurangan 18 sen kepada RM8.47 dan Tenaga Nasional menyusut lapan sen kepada RM14.00.

Dalam kalangan kaunter paling aktif, Capital A dan ISF Group meningkat lima sen masing-masing kepada 63.5 sen dan 53 sen, Zetrix AI susut dua sen kepada 80 sen, dan Tanco Holdings tidak berubah pada RM1.34.

Dalam kalangan kaunter untung utama, Nestle meningkat 50 sen kepada RM114.00, VSTECS melonjak 21 sen kepada RM4.24, manakala Kerjaya Prospek dan Riverview Rubber Estates meningkat 10 sen masing-masing kepada RM2.75 dan RM3.00.

Dalam kalangan saham paling rugi, Fraser & Neave susut RM1.08 kepada RM34.42, Dutch Lady Milk Industries turun tujuh sen kepada RM33.10, Hong Leong Bank berkurangan 52 sen kepada RM24.32, Petronas Gas susut 34 sen kepada RM18.26, dan Hong Leong Financial turun 30 sen kepada RM21.70.

Di papan indeks, Indeks FBM Top 100 menyusut 157.34 mata kepada 12,499.84, Indeks FBM Emas turun 150.89 mata kepada 12,691.50, Indeks FBM Mid 70 merosot 95.80 mata kepada 17,467.43, Indeks FBM Emas Syariah berkurangan 118.04 mata kepada 12,278.23, dan Indeks FBM ACE susut 2.98 mata kepada 4,743.78.

Mengikut sektor, Indeks Perkhidmatan Kewangan turun 371.34 mata kepada 21,136.34, Indeks Produk dan Perkhidmatan Perindustrian susut 1.87 mata kepada 176.14, Indeks Tenaga berkurangan 4.37 mata kepada 753.06, dan Indeks Perladangan turun 79.80 mata kepada 8,364.98.

Jumlah dagangan Pasaran Utama turun kepada 1.84 bilion unit bernilai RM3.65 bilion daripada 2.04 bilion unit bernilai RM3.96 bilion pada Rabu.

Jumlah dagangan waran merosot kepada 800.64 juta unit bernilai RM115.53 juta daripada 956.75 juta unit bernilai RM137.89 juta sebelumnya.

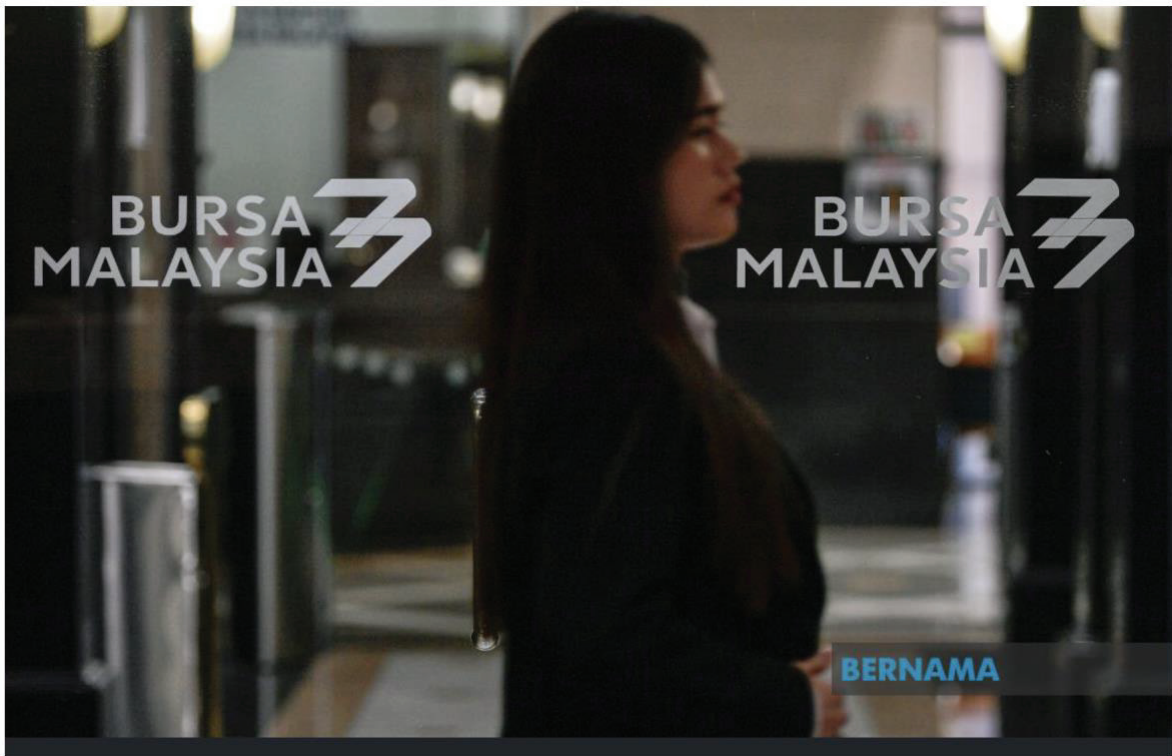
Jumlah dagangan Pasaran ACE menyusut kepada 419.29 juta unit bernilai RM176.11 juta daripada 653.13 juta unit bernilai RM309.05 juta.

Kaunter produk dan perkhidmatan pengguna menyumbang 406.62 juta saham yang diniagakan di Pasaran Utama, produk dan perkhidmatan perindustrian (254.34 juta), pembinaan (157.38 juta), teknologi (234.95 juta), perkhidmatan kewangan (179.94 juta), hartanah (221.96 juta), perladangan (44.38 juta), amanah pelaburan hartanah (25.16 juta), dana tertutup (371,700), tenaga (103.91 juta), penjagaan kesihatan (89.09 juta), telekomunikasi dan media (37.88 juta), pengangkutan dan logistik (42.55 juta), utiliti (41.91 juta), dan amanah perniagaan (109,200).

-- BERNAMA

BURSA MALAYSIA ENDS LOWER AS PROFIT-TAKING GATHERS PACE

29/01/2026



KUALA LUMPUR, Jan 29 (Bernama) -- Bursa Malaysia extended its pullback as profit-taking intensified, with most sectors closing lower in a broad-based consolidation, an analyst said.

At 5 pm, the FTSE Bursa Malaysia KLCI (FBM KLCI) fell 25.60 points, or 1.46 per cent, to 1,730.89 from Wednesday's close of 1,756.49.

The market bellwether opened 3.18 points lower at 1,753.31, marking the day's high, and hit a low of 1,719.52 during the mid-morning session.

In the broader market, losers trounced gainers 800 to 372, some 532 counters were unchanged, 1,015 counters were untraded and 109 were suspended.

Turnover slipped to 3.06 billion shares valued at RM3.95 billion from Wednesday's 3.65 billion units worth RM4.41 billion.

IPPFA Sdn Bhd director of investment strategy and country economist Mohd Sedek Jantan said the local market's decline for a second consecutive session reflects a deliberate reset after its strong rally earlier in the week.

He said the index's peak of 1,770 on Tuesday marked a solid 5.42 per cent year-to-date gain, prompting natural profit-taking after it broke above the key technical resistance around 1,760.

"Importantly, the broad-based nature of the pullback suggests a healthy digestion of gains rather than a loss of market conviction, as selling pressure has not been driven by negative catalysts or earnings downgrades.

"This consolidation is therefore constructive, helping to reset valuations, stabilise market breadth and establish a more sustainable base for the next leg of the uptrend, provided external conditions remain supportive," he told Bernama.

Hence, he expects the index to test the 1,730-1,740 range this week, a level that was effectively reached today, with the FBM KLCI closing at 1,730 level.

Among heavyweights, both Maybank and IHH Healthcare dropped 16 sen to RM11.64 and RM8.86, respectively. Public Bank slipped 10 sen to RM4.85, CIMB dipped 18 sen to RM8.47, and Tenaga Nasional edged down eight sen to RM14.00.

On the most active list, both Capital A and ISF Group inched up five sen to 63.5 sen and 53 sen, respectively, Zetrix AI eased two sen to 80 sen, and Tanco Holdings was flat at RM1.34.

Among the top gainers, Nestle rose 50 sen to RM14.00, VSTECs jumped 21 sen to RM4.24, while Kerjaya Prospek and Riverview Rubber Estates went up 10 sen each to RM2.75 and RM3.00, respectively.

As for the top decliners, Fraser & Neave decreased RM1.08 to RM34.42, Dutch Lady Milk Industries dropped seven sen to RM33.10, Hong Leong Bank slid 52 sen to RM24.32, Petronas Gas shed 34 sen to RM18.26, and Hong Leong Financial erased 30 sen to RM21.70.

On the index board, the FBM Top 100 Index shrank 157.34 points to 12,499.84, the FBM Emas Index dropped 150.89 points to 12,691.50, the FBM Mid 70 Index sank 95.80 points to 17,467.43, the FBM Emas Shariah Index slid 118.04 points to 12,278.23, and the FBM ACE Index eased 2.98 points to 4,743.78.

Sector-wise, the Financial Services Index tumbled 371.34 points to 21,136.34, the Industrial Products and Services Index edged down 1.87 points to 176.14, the Energy Index trimmed 4.37 points to 753.06, and the Plantation Index shed 79.80 points to 8,364.98.

The Main Market volume fell to 1.84 billion units worth RM3.65 billion from Wednesday's 2.04 billion units worth RM3.96 billion.

Warrants turnover declined to 800.64 million units worth RM115.53 million from 956.75 million units worth RM137.89 million previously.

The ACE Market volume dwindled to 419.29 million units worth RM176.11 million from 653.13 million units worth RM309.05 million yesterday.

Consumer products and services counters accounted for 406.62 million shares traded on the Main Market, industrial products and services (254.34 million), construction (157.38 million), technology (234.95 million), financial services (179.94 million), property (221.96 million), plantation (44.38 million), real estate investment trusts (25.16 million), closed-end fund (371,700), energy (103.91 million), healthcare (89.09 million), telecommunications and media (37.88 million), transportation and logistics (42.55 million), utilities (41.91 million), and business trusts (109,200).

-- BERNAMA